



SHIVAM LIFESTYLE[®]

Making your Dream Visible

BUILDING MODERN
LIVING

LUXURY LIVING IN THE HEART OF
CHEMBUR EAST

SHIVAM YASHODA



COMMERCIAL +
RESIDENTS PROJECT



LUXURY 2 & 3 BHK
WITH DECK BALCONY

RERE REGD. : PR1180002500845

A PLACE TO CREATE AND
LIVE YOUR BEST LIFE

Road No. 1, Opp. Natraj Cinema,
Chembur East, Mumbai - 400 071.



Elevators



Rain Water
Harvesting



Fitness
Centre



Car parking



Grand
Entrance lobby



Fire fighting
Equipment



Ground + 1st Commercial &
8 Storey Residential

MOST CONVENIENT LOCATION IN MUMBAI

**1 MINUTE FROM CHEMBUR
RAILWAY STATION EAST**



**2 MINUTES FROM EASTERN
EXPRESS & SANTACRUZ -
CHEMBUR LINK ROAD (SCLR)**



5 MIN. JAIN MANDIR CHEMBUR

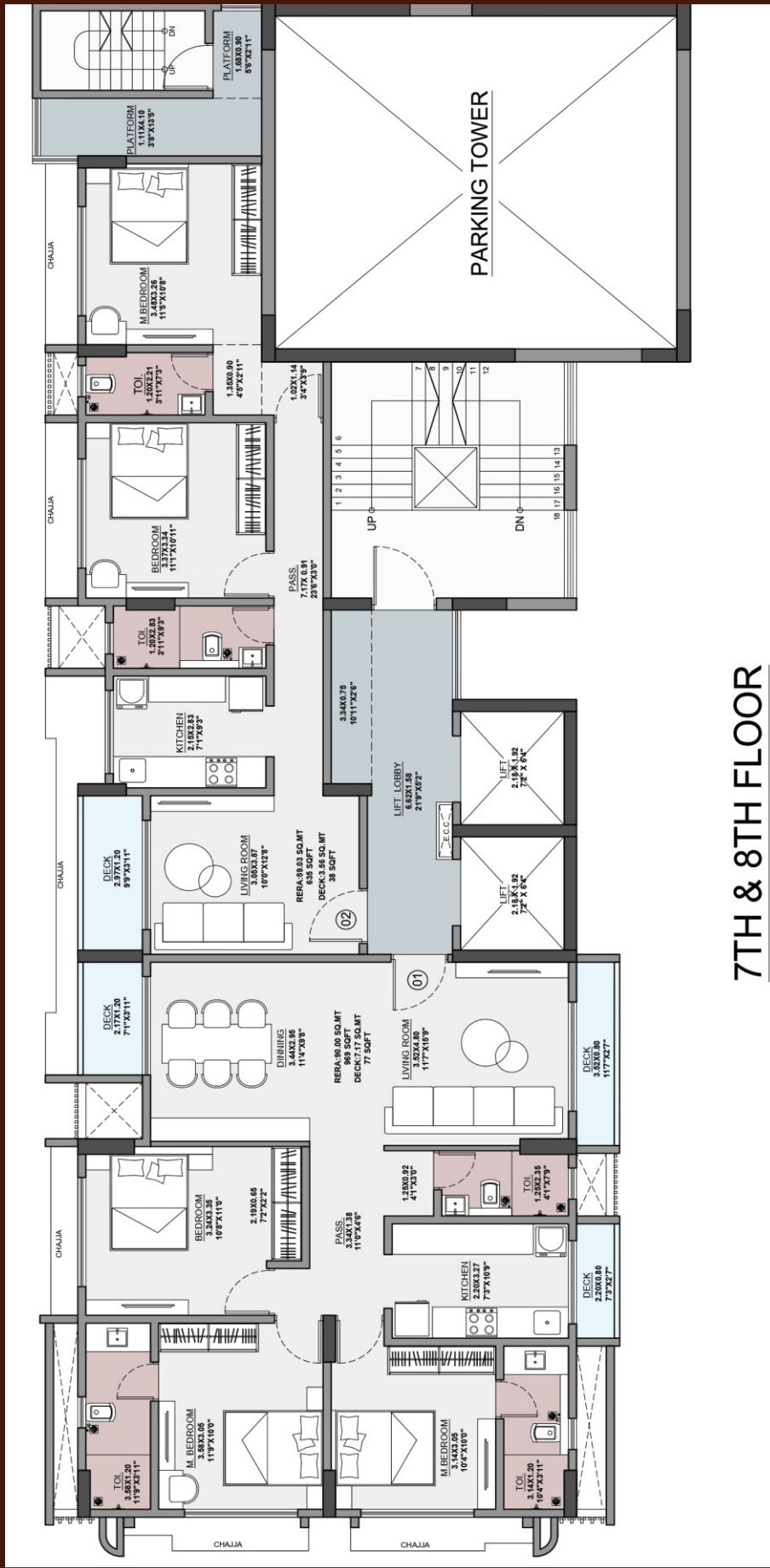


5 MIN. FROM 2B METRO LINE

**METRO LINE 2B DRIVES CHEMBUR
TOWARDS A BRIGHTER, FASTER FUTURE**



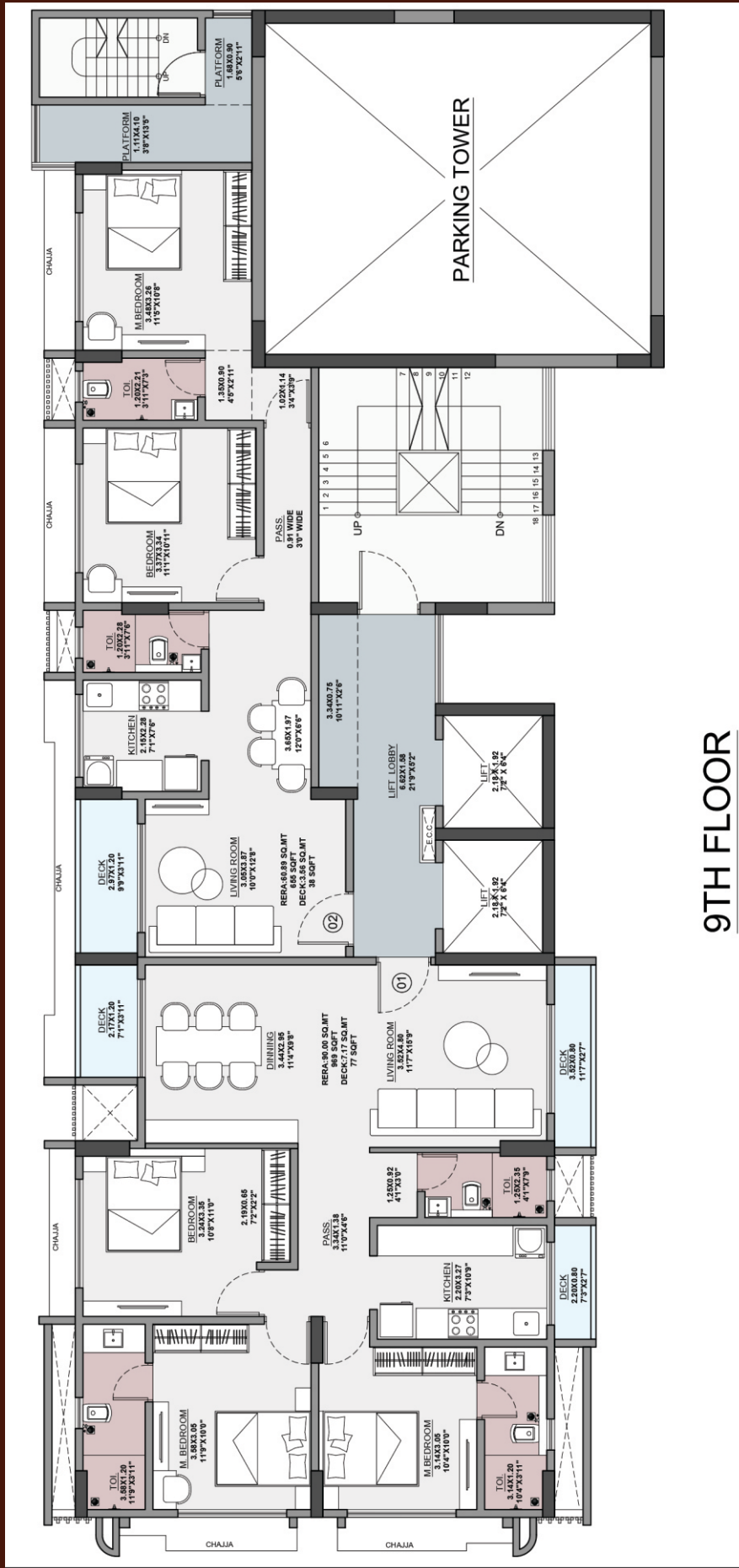
FLOOR PLAN



7TH & 8TH FLOOR

ROAD NO. 1

FLOOR PLAN



SHIVAM LIFESTYLE

Office No. 101, 1st Floor, Charisma Centre, Road No 19,
Near Ambedkar Garden, Chembur, Mumbai- 400071

+91 9820793421 | 2249702476

shivamlifestyle2019@gmail.com

www.shivamlifestyle.com